

Works for Jandorf Fan Switches:

- #60303 – 3-Speed 4-Wire (3A-250V, 6A-125V, 3(1)A-250V)
- #60306 – 3-Speed 8-Wire (3A-250V, 6A-125V)

What's Inside

1 – Fan Switch with Pull Chain

What's Needed

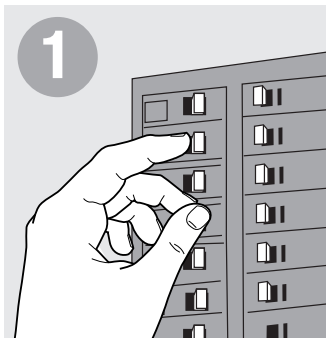
- Screwdriver
- Wire Stripper

What's Its Purpose

Turns ceiling fan on and off and regulates fan speed.

Warning

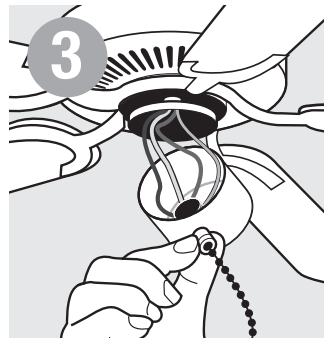
- Before beginning **TURN OFF POWER** to the unit from the fuse or circuit breaker.
- Follow local electrical regulations or codes when installing and using this product.
- Deviation from the assembly instructions may result in a **risk of fire or electric shock**.
- Maximum ambient air temperature of 50°C (122F°) at switch site.



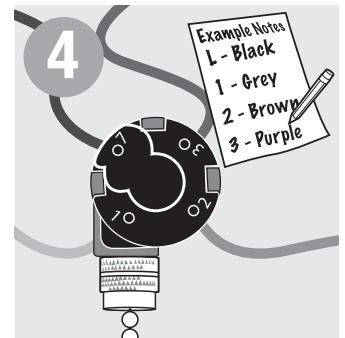
Before beginning **TURN OFF POWER** to unit from fuse or circuit breaker.



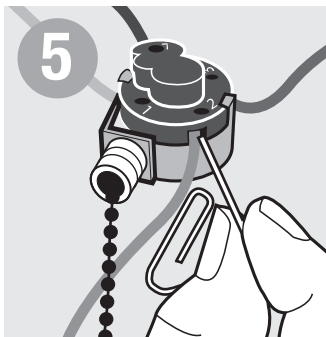
Remove switch housing cover and light kit if present.



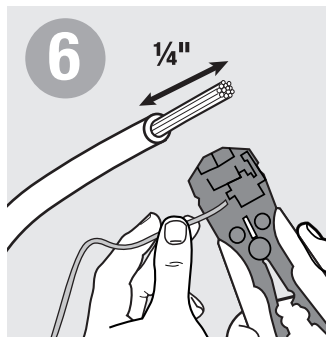
Unscrew chain guide to remove switch.



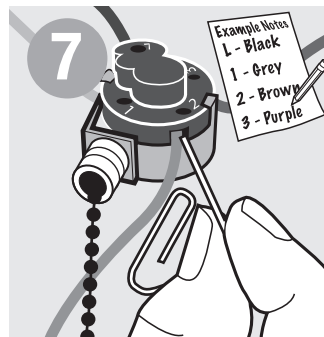
Label all wires to position and color before disconnecting.



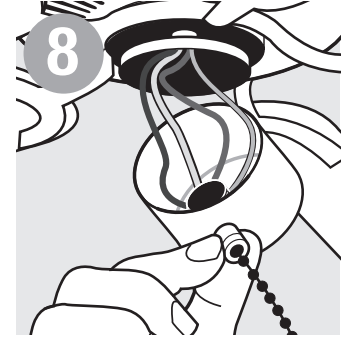
Into each terminal slot insert a straightened paper clip, push down on spring and pull out wire.



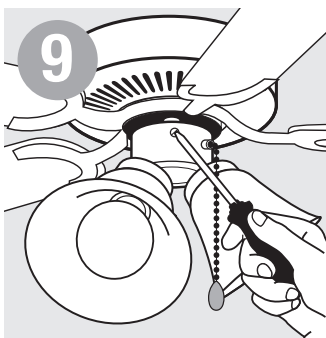
Before reconnecting, make sure old wires on fixture have proper insulation and exposed 1/4" wire end with no loose strands. Wire tips need to be tinned (soldered).



Into each terminal slot insert straightened paper clip, push down on spring and push in new wire in same position as old switch.



Remount switch, screwing on the chain guide to secure.



Replace housing cover and light kit.